

# **CHRISTINA**

**SCHOOL DISTRICT**

## **DOWNES ELEMENTARY SCHOOL RENOVATION & EXPANSION**

Board Presentation - Schematic Design  
June 15, 2021



# Agenda

- Scope Parameters & Program Goals
- The New Learning Environment
- Schematic Design Budget Review
- Next Steps





# Scope Parameters & Program Goals



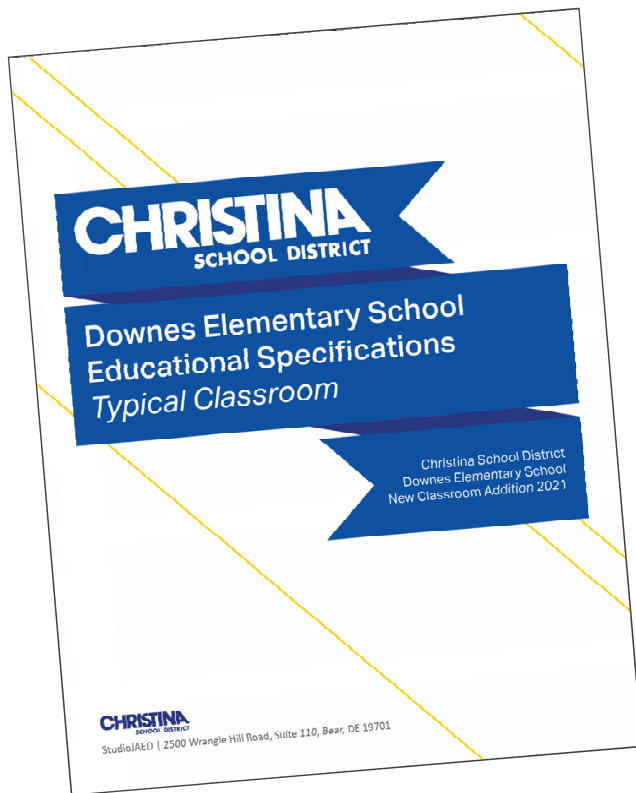
## Scope Parameters & Program Goals

- 4 New Classrooms
- 2-Storey Addition Concept
- Planned to accommodate the Chinese Immersion Program

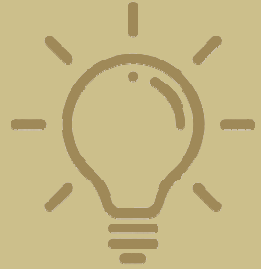




## Scope Parameters & Program Goals



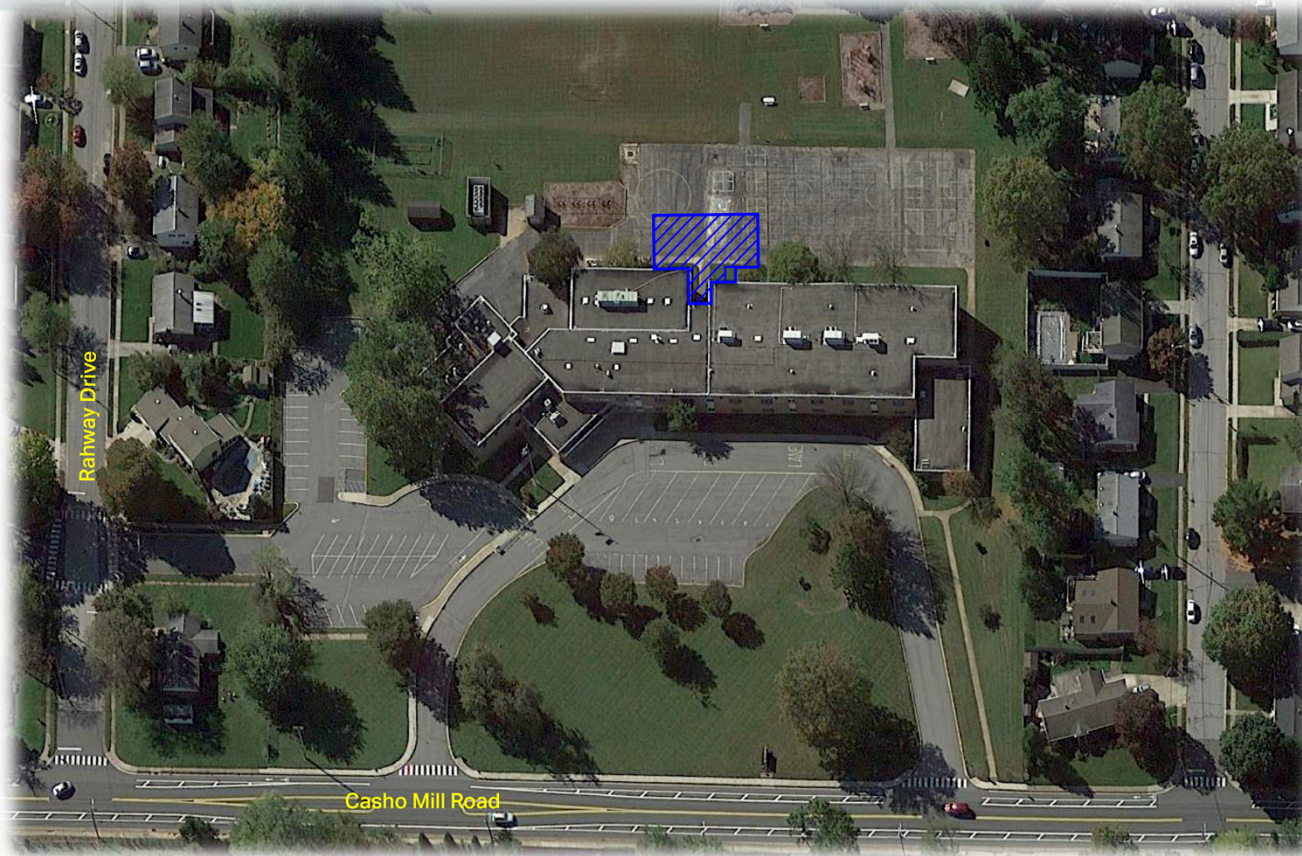
- Create a comfortable, well lit, acoustical space for small & large groups
- Provide a flexible space to accommodate a variety of learning activities
- Inspire students to become critical thinkers, problem solvers, and lifelong learners



# The New Learning Environment

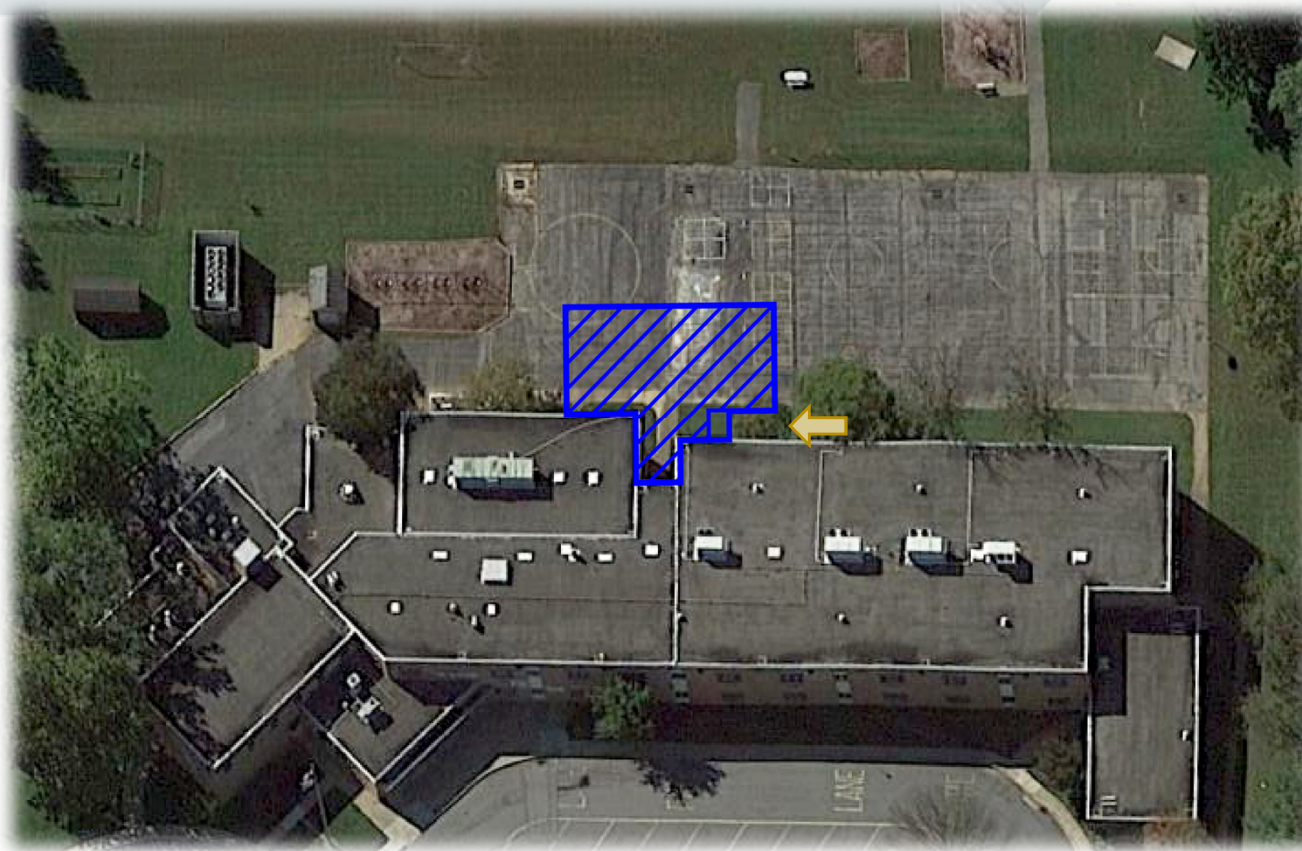


# The New Learning Environment





# The New Learning Environment

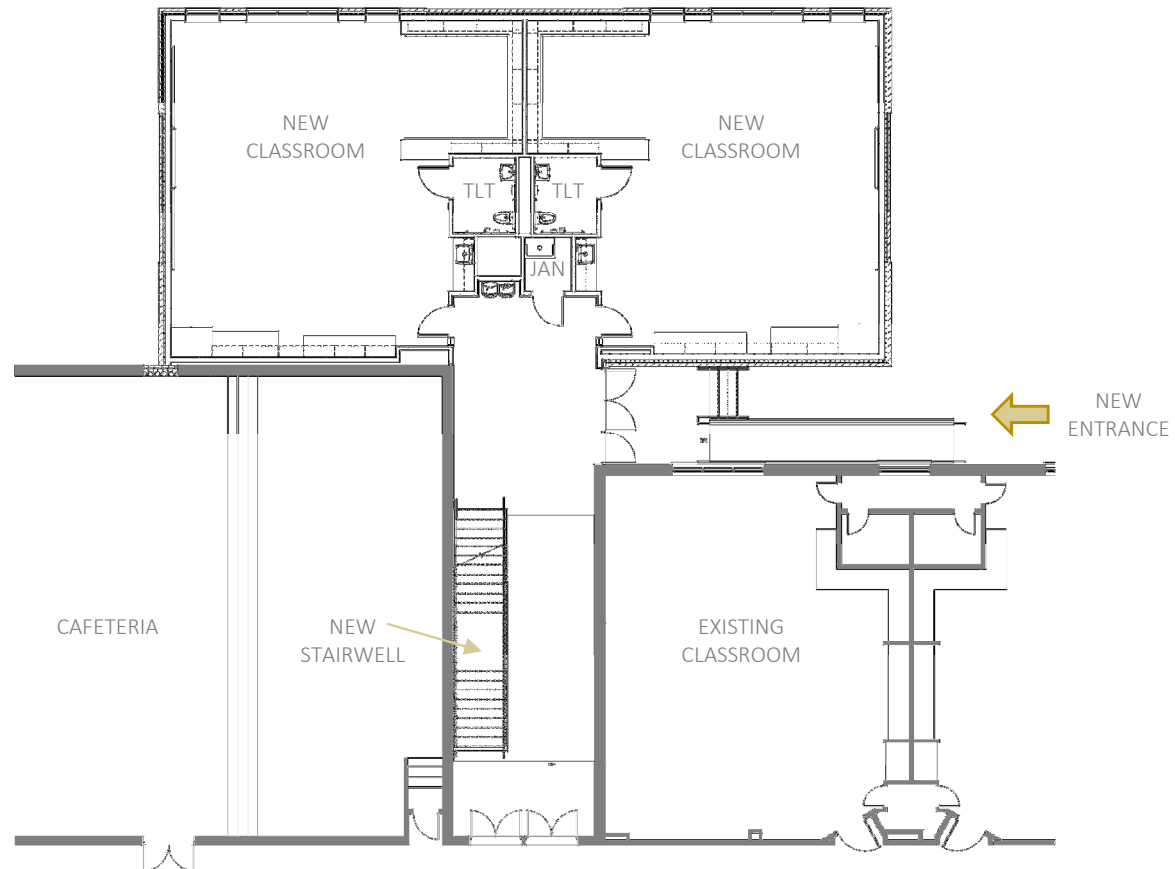






# The New Learning Environment

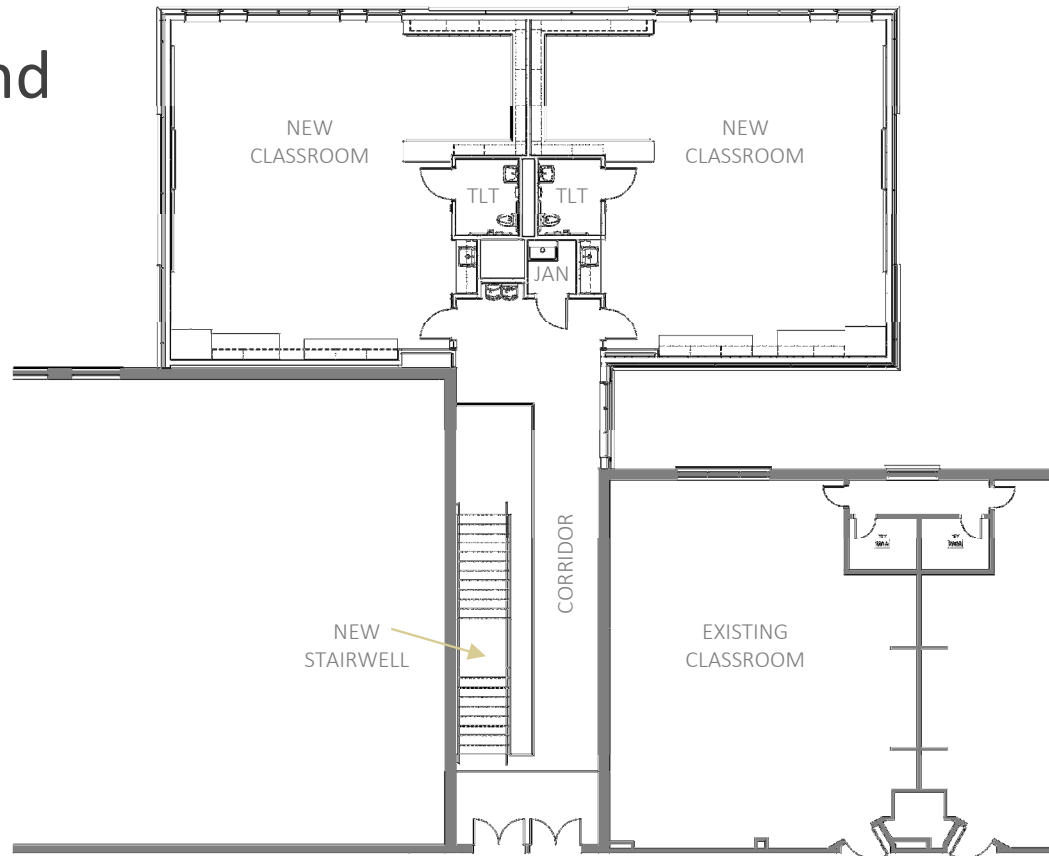
## Partial First Floor Plan





# The New Learning Environment

## Partial Second Floor Plan















# Schematic Design Budget Review





## Schematic Design Budget Review

■ Project Budget	\$2,239,000	} Shortfall \$648,313
■ Schematic Design Estimate	\$2,887,313	
■ Base Bid: 4 Classroom Addition	\$2,382,364	
■ Alt 1: Addition HVAC	\$339,605	
■ Alt 2: Addition Flooring	\$77,908	
■ Alt 3: Re-pave Rear Play Area	\$87,435	



Next Steps



## Next Steps

- Board Review & Approval of SD Documentation (June)
- Submit SD Documentation to DDOE
- Generate Design Development (DD) Documentation
- Board Review & Approval of DD Documentation (July)

Thank You